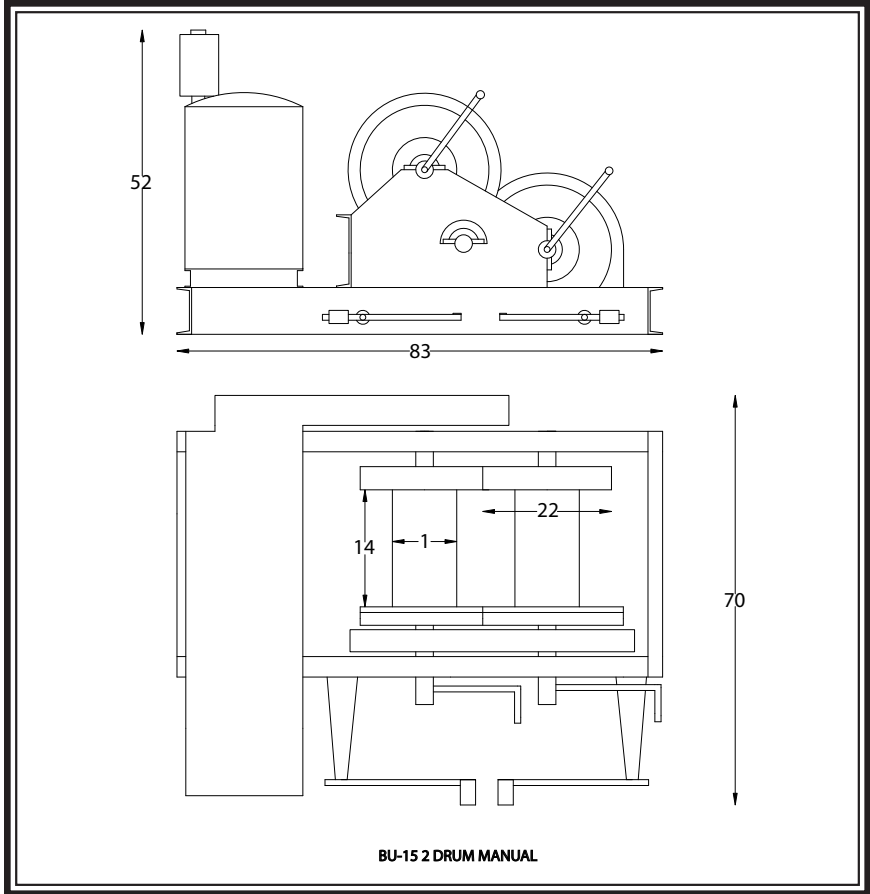
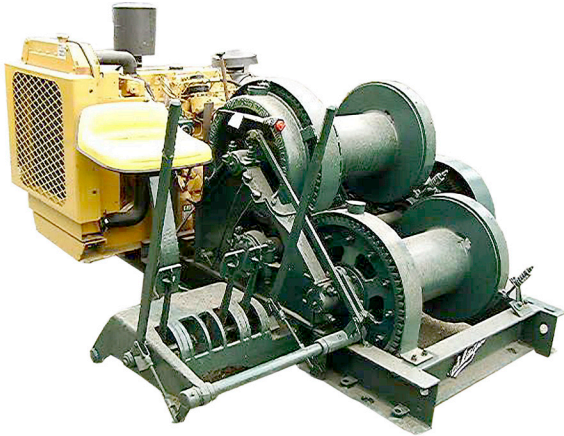


Skagit BU-15 Specifications (Manual Controlled)

Used Diesel Mechanical Rental Winches



• Drum Size

- Flange diameter (inches) 22
- Barrel diameter (inches) 11
- Barrel length (inches) 14

• Cable Capacity

- 1/2 inch (length in feet) 1,340
- 5/8 inch (length in feet) 850
- 3/4 inch (length in feet) 590

Using wire rope larger or smaller than what the winch was designed for could cause serious damage to the winch, operator, ratchets & personnel.

• Maximum Cable Size

- Diameter (inches) 3/4

• Approximate Weight

- Double-drum—standard (pounds) 4,000

IMPORTANT

Before installation see maintenance and operations manual for additional warnings and precautions.

This equipment is not to be used for lifting supporting or transporting people or lifting or supporting loads over people.

All quotes are subject to product's availability, prior sale or other disposition. All details are believed correct, but without guarantee. Product quoted present location unless otherwise stated above or mutually agreed upon. Price quotes are valid for 10 days unless otherwise stated above. *Standard rental/sale terms and conditions may be viewed on the homepage at our website, www.rasmussenco.com*

Performance

Typical single drum line pull in pounds and line speed in feet-per-minute with a Detroit Diesel 3-71N65 engine driving through a Skagit TRA-50 transmission with an input ratio of 100/27.

SINGLE DRUM PERFORMANCE			
Drum	Gear	Maximum Pull	Maximum Speed
Bare	1st	23,856 Lbs @ 76 FPM	20,614 Lbs @ 89 FPM
Bare	2nd	13,384 Lbs @ 136 FPM	11,565 Lbs @ 158 FPM
Bare	3rd	7,050 Lbs @ 258 FPM	6,092 Lbs @ 301 FPM
Bare	4th	5,108 Lbs @ 356 FPM	4,414 Lbs @ 415 FPM
Average	1st	15,806 Lbs @ 115 FPM	13,659 Lbs @ 134 FPM
Average	2nd	8,868 Lbs @ 205 FPM	7,663 Lbs @ 239 FPM
Average	3rd	4,606 Lbs @ 303 FPM	4,036 Lbs @ 454 FPM
Average	4th	3,385 Lbs @ 537 FPM	2,925 Lbs @ 627 FPM
Full	1st	12,631 Lbs @ 144 FPM	10,914 Lbs @ 168 FPM
Full	2nd	7,086 Lbs @ 257 FPM	6,123 Lbs @ 289 FPM
Full	3rd	3,732 Lbs @ 487 FPM	3,225 Lbs @ 568 FPM
Full	4th	2,705 Lbs @ 672 FPM	2,337 Lbs @ 784 FPM

Note: Line speed and pull performance on our entire rental fleet is estimated on manufacturer specifications. Consult manufacturer for exact line speeds and pulls.



RASMUSSEN EQUIPMENT COMPANY

Northwest Office

P.O. Box 81206
 Seattle, WA 98108
 Phone: (206) 762-3700
 Fax: (206) 762-5003
equipmentsales@rasmussenco.com

Mooring Systems • Winches • Cranes • Barges
 Anchors • Fairleads • Deckleads • Wire Rope

Sales • Rentals

Gulf Coast Office

2220 Engineers Road
 Belle Chasse, LA 70037
 Phone: (504) 392-0442
 Fax: (504) 392-0107
equipbc@rasmussenco.com