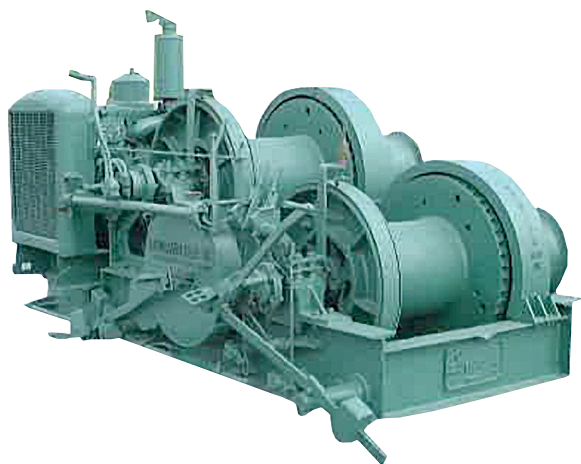


# Skagit BU-140 Specifications (Manual Controlled)

## Used Diesel Mechanical Rental Winches



### • Drum Size

- Flange diameter (inches) ..... 47
- Barrel diameter (inches)..... 19
- Barrel length (inches) ..... 24

### • Cable Capacity

- 1-1/8 inch (length in feet) ..... 2,300
- 1-1/4 inch (length in feet) ..... 1,850
- 1-3/8 inch (length in feet) ..... 1,530

Using wire rope larger or smaller than what the winch was designed for could cause serious damage to the winch, operator, ratchets & personnel.

### • Maximum Cable Size

- Diameter (inches)..... 1-3/8

### • Approximate Weight

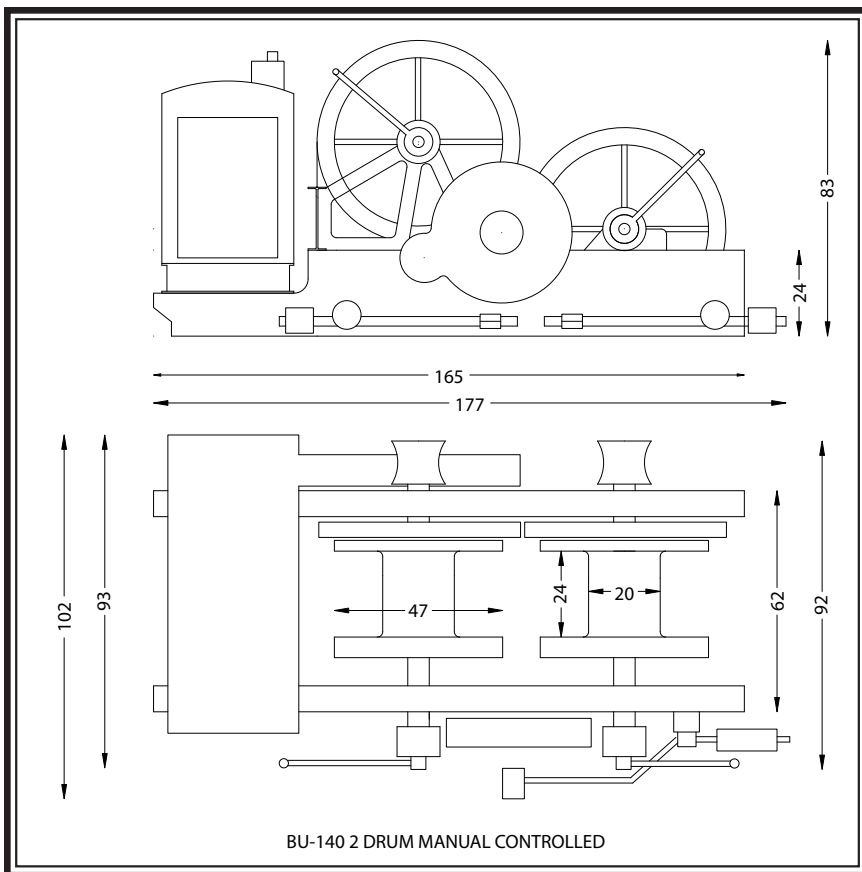
- Double-drum—standard (pounds) ... 26,000

### IMPORTANT

Before installation see maintenance and operations manual for additional warnings and precautions.

This equipment is not to be used for lifting supporting or transporting people or lifting or supporting loads over people.

All quotes are subject to product's availability, prior sale or other disposition. All details are believed correct, but without guarantee. Product quoted present location unless otherwise stated above or mutually agreed upon. Price quotes are valid for 10 days unless otherwise stated above. *Standard rental/sale terms and conditions may be viewed on the homepage at our website, [www.rasmussenco.com](http://www.rasmussenco.com)*



### Performance

Typical single drum line pull in pounds and line speed in feet-per-minute with a Detroit Diesel 6-71N65 engine driving through a Skagit TRA-70 transmission with an input of 65/15.

SINGLE DRUM PERFORMANCE			
Drum	Gear	Maximum Pull	Maximum Speed
Bare	1st	141,283 Lbs @ 25 FPM	121,497 Lbs @ 32 FPM
Bare	2nd	79,264 Lbs @ 44 FPM	68,163 Lbs @ 58 FPM
Bare	3rd	41,750 Lbs @ 83 FPM	35,903 Lbs @ 109 FPM
Bare	4th	30,253 Lbs @ 115 FPM	26,106 Lbs @ 151 FPM
Average	1st	84,316 Lbs @ 41 FPM	72,507 Lbs @ 54 FPM
Average	2nd	47,303 Lbs @ 74 FPM	40,679 Lbs @ 96 FPM
Average	3rd	24,916 Lbs @ 140 FPM	21,426 Lbs @ 183 FPM
Average	4th	18,055 Lbs @ 193 FPM	15,526 Lbs @ 253 FPM
Full	1st	64,834 Lbs @ 54 FPM	55,754 Lbs @ 70 FPM
Full	2nd	36,374 Lbs @ 96 FPM	31,280 Lbs @ 125 FPM
Full	3rd	19,159 Lbs @ 182 FPM	16,476 Lbs @ 238 FPM
Full	4th	13,883 Lbs @ 251 FPM	11,939 Lbs @ 329 FPM

**Note:** Line speed and pull performance on our entire rental fleet is estimated on manufacturer specifications. Consult manufacturer for exact line speeds and pulls.



## RASMUSSEN EQUIPMENT COMPANY

### Northwest Office

P.O. Box 81206  
Seattle, WA 98108  
Phone: (206) 762-3700  
Fax: (206) 762-5003  
[equipmentsales@rasmussenco.com](mailto:equipmentsales@rasmussenco.com)

Mooring Systems • Winches • Cranes • Barges  
Anchors • Fairleads • Deckleads • Wire Rope

Sales • Rentals

### Gulf Coast Office

2220 Engineers Road  
Belle Chasse, LA 70037  
Phone: (504) 392-0442  
Fax: (504) 392-0107  
[equipbc@rasmussenco.com](mailto:equipbc@rasmussenco.com)