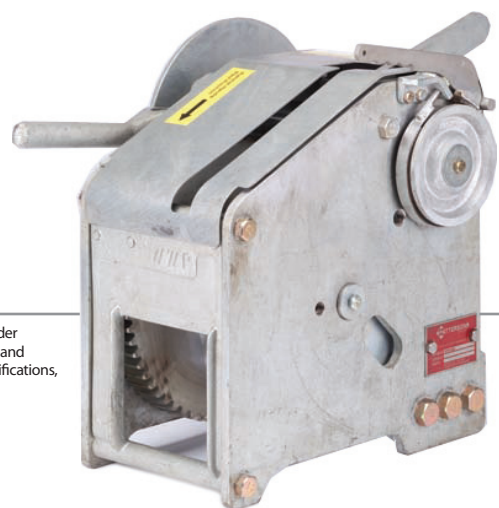
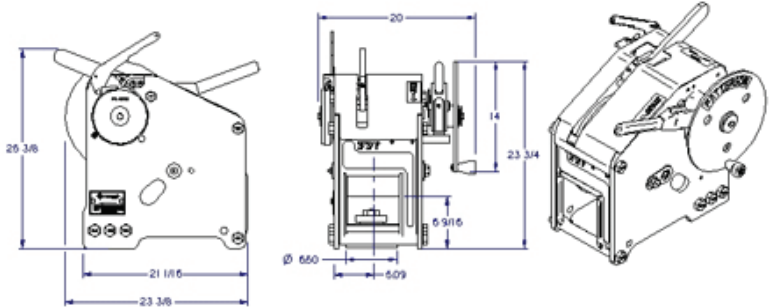




## The BC-40 Winch: Built for Speed

MODEL NUMBER: WWP40BC		BARGE CONNECTORS
Ultimate Capacity*	80,000 lbs.	
Typical Line Tension*	10,000 lbs.	
<b>Drum Capacities*</b>		
3/4"	95'	
7/8"	85'	
1"	70'	
Overall Width	19 3/8"	
Overall Height	23 3/4"	
Overall Length	23 5/16"	
Weight – Net (lbs.)	442	
Weight – Shipping (lbs.)	490	



\*All performance data and specifications set forth in the above table are guidelines. The referenced data and specifications were produced under controlled testing conditions and should be used as estimates only. Due to variability in individual operators, in weather, in towing conditions, and in various other factors, actual results may vary. In addition, for the purpose of installation, please verify all dimensions as the dimensions, specifications, data and other information contained in this brochure are subject to change at any time without notice.

### No More Ratchets

When you're ready to upgrade and say goodbye to ratchet problems—but you still use wire rope—the BC-40 is the winch you need. Economical and easy to use, this winch is the first step toward modernizing your rigging. You'll be surprised at how simple it is to improve your operations.

### Fast on the Take Up

The BC-40 has long been a favorite among barge operators for its unrivaled speed. A spinner knob on the compact hand wheel allows fast take-up, and the heavy-duty throw-out handle makes quick load release easy and safe. The BC-40's design lets you make up or break up a tow in half the time of conventional rigging using ratchets, chains, and wires. That saves you time (and money).

### Built Tough

Patterson knows conditions are rough out there. That's why we designed the BC-40 with a hot-dipped galvanized corrosion package. The patented double-dog design allows for higher line tension, and stud mounting allows for 360° operation. And the patented open-bottom design makes for easy clean out.



9.1.2011 Revision 0