

## The Electric Winch

## TOWBOAT WINCHES

### Performance Data Approximate (lbs.)

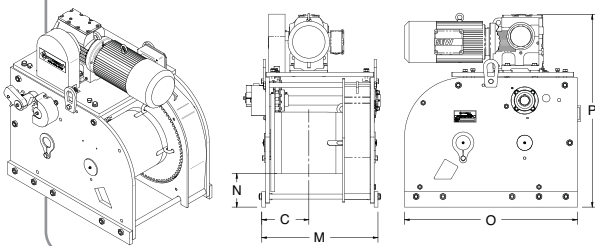
### Drum Capacities Approximate

Model	Dog-Hold Capacity	Break-Hold Capacity	Line Pull 1st Wrap	Line Speed 1st Pull	Stall Pull 1st Wrap	Ult Shock Load	1/2"	5/8"	3/4"	7/8"	1"	1 1/8"
WWP20E-3.0	40,000	43,000	6,987	14.7	20,900	40,000	220'	140'	100'	xx	xx	xx
WWP30E-3.0	60,000	47,000	7,600	13.4	23,000	60,000	xx	120'	85'	75'	xx	xx
WWP30E-5.0	60,000	33,000	9,000	18	24,000	60,000	xx	120'	85'	75'	xx	xx
WWP40E-5.0	80,000	40,000	9,000	14.5	23,000	80,000	xx	xx	180'	130'	100'	xx
WWP40E-7.5	80,000	75,000	9,900	18	40,500	80,000	xx	xx'	180'	130'	100'	xx
WWP65E-7.5	130,000	99,000	13,000	14	36,000	130,000	xx	xx'	xx	230'	180'	150'
WWP65E-12.5	130,000	80,000	16,000	24	47,000	130,000	xx	xx	xx	230'	180'	150'
WWP75E-12.5	150,000	90,000	19,000	21	54,000	150,000	xx	xx	xx	xx	190'	150'

### Dimensions Approximate (in.)

### (lbs.)

Model	Drum Diameter	C	M	N	O	P	Weight Net	Approximate Shipping
WWP20E-3.0	8.625	5.81	14.75	6.5	35	32.5	830	880
WWP30E-3.0	10	8.81	19	6	35	32	1,015	1,065
WWP30E-5.0	10	8.81	19	6	35	32	1,020	1,070
WWP40E-5.0	10	9.18	24.5	5	37	40	1,415	1,465
WWP40E-7.5	10	9.18	24.5	5	37	40	1,430	1,480
WWP65E-7.5	14	10.75	25.75	6.5	38	48	2,140	2,190
WWP65E-12.5	14	10.75	25.75	6.5	38	48	2,150	2,200
WWP75E-12.5	16	8.25	22.25	8.75	45	50.25	3,550	3,600
WWP75E-12.5-14	16	10.18	26.25	8.75	45	50.25	3,840	3,890
WWP75E-12.5-18	16	12.18	30.25	8.75	45	50.25	3,900	3,950



\*All performance data and specifications set forth in the above table are guidelines. The referenced data and specifications were produced under controlled testing conditions and should be used as estimates only. Due to variability in individual operators, in weather, in towing conditions, and in various other factors, actual results may vary. In addition, for the purpose of installation, please verify all dimensions as the dimensions, specifications, data and other information contained in this brochure are subject to change at any time without notice.

### Heavy duty? That's Patterson.

Patterson's electric winches, available in capacities from 20 to 90 tons, are designed

for easy operation and rock-solid durability. The heavy-duty roller chain, sprockets, and roller bearings are exceptionally strong, and the phosphor bronze bearings can take whatever you can dish out. Thermo-statically protected motors, machined alloy gearing,

and NEMA 4 spring-loaded electric brakes make our towboat winches, a study in strength. We offer 208V or 230/460V 3-phase, 60Hz high torque motors, with other voltages, and special marine motors available.



Revised 6.18.2014