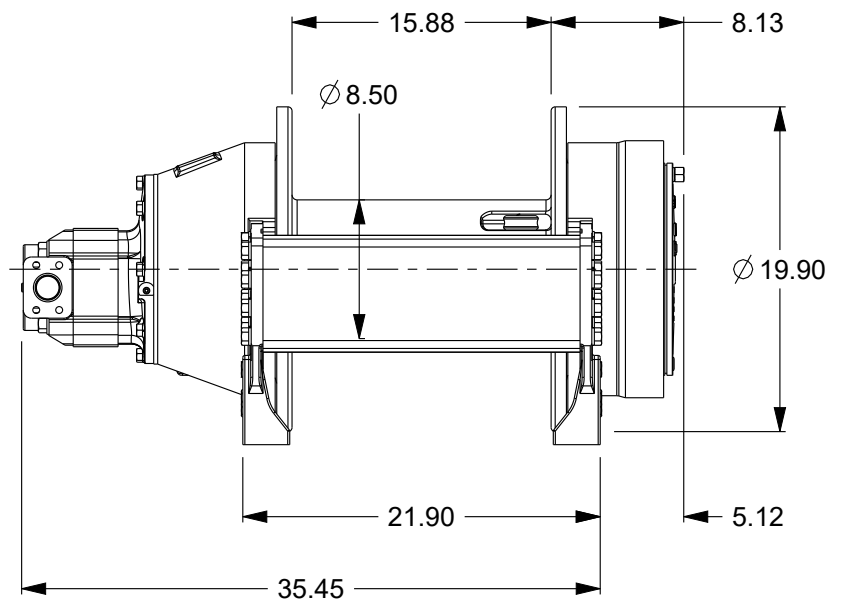
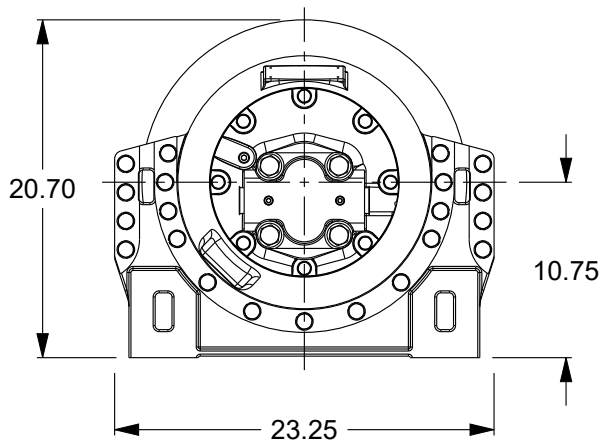
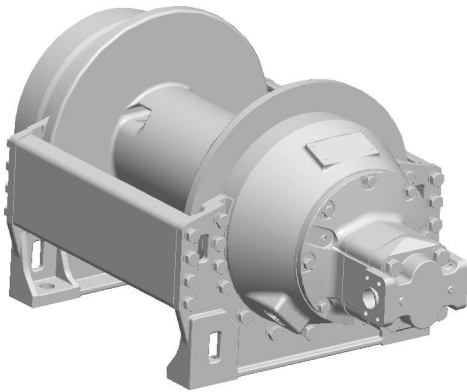


Planetary Winch

Model: H18-3-101-3

Est. Weight: 923 lb



Layer	Rope Capacity (ft)	Payin		Payout	
		Linepull (lb)	Linespeed (fpm)	Linepull (lb)	Linespeed (fpm)
1	52	18000	122	3913	561
4	257	12100	182	2630	837
7	538	9120	241	1983	1109

Performance is based on 76 gpm @ 2300 psi with Ø .75" rope (Maximum rope capacity)

The rated line pulls are for the product only. Consult the rope manufacturer for rope ratings.

