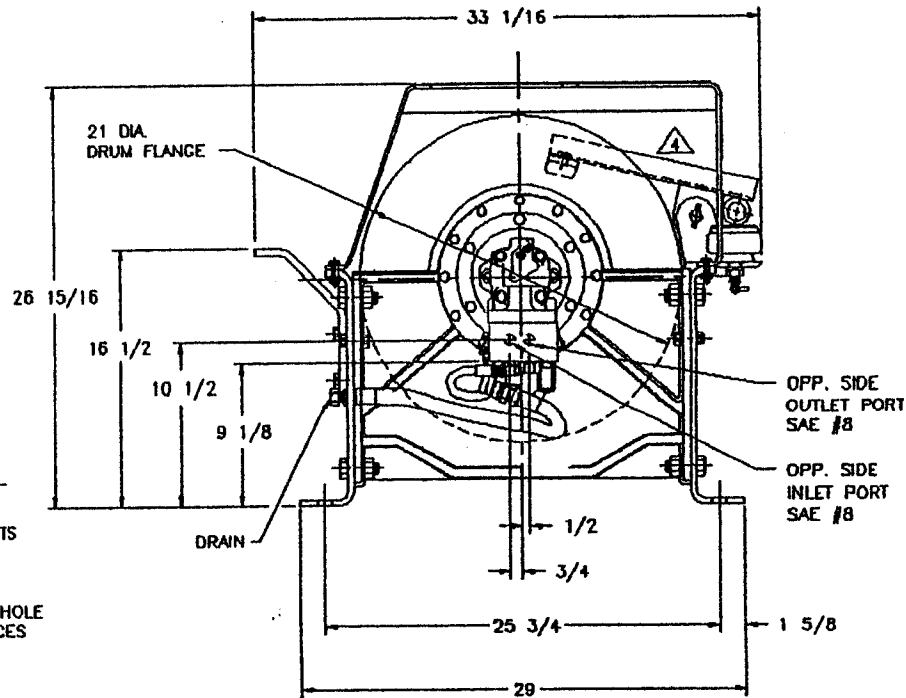
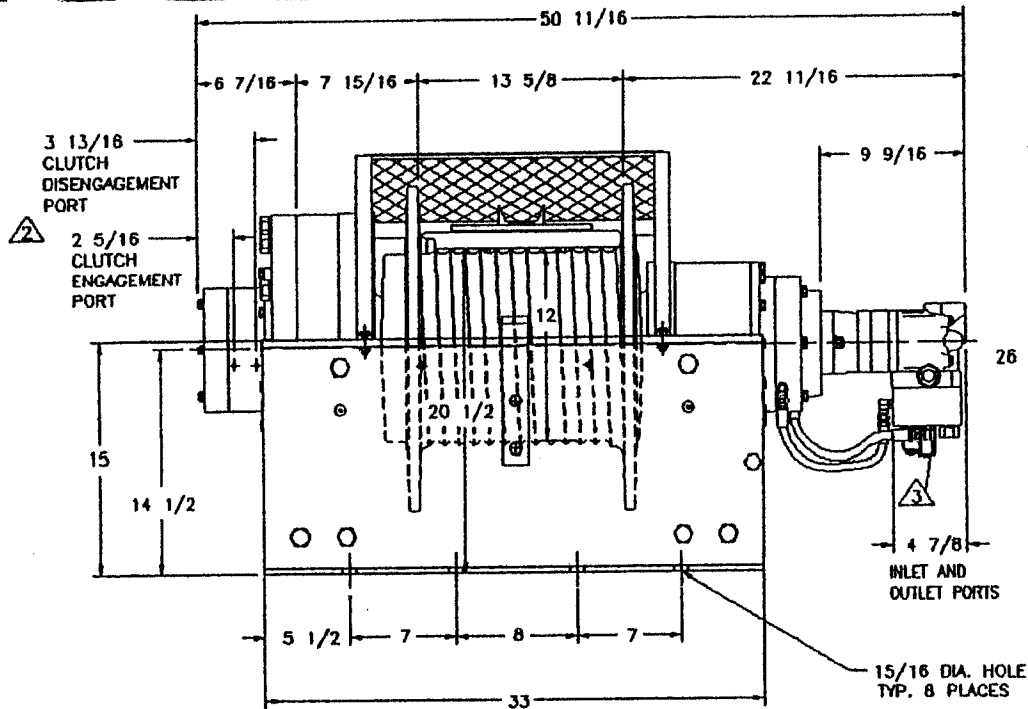


**HYDRAULIC WINCHES  
51882 AND 51883**



1" CABLE				
WINCH SPECIFICATIONS				
3,000 PSI @ 24 GPM				
LAYER	LINE PULL* IN LOW (LBS.)	LINE SPEED (FT./MIN.)		CABLE CAPACITY (TOTAL FT.)
		IN LOW	IN HIGH	
1	55,000	13.5	27.0	41
2	47,666	15.5	31.1	90
3	42,058	17.5	35.3	145
4	37,631	19.5	39.4	205

THE RATED LINE PULLS SHOWN ARE FOR THE WINCH ONLY.  
CONSULT THE WIRE ROPE MANUFACTURER FOR WIRE ROPE RATINGS.

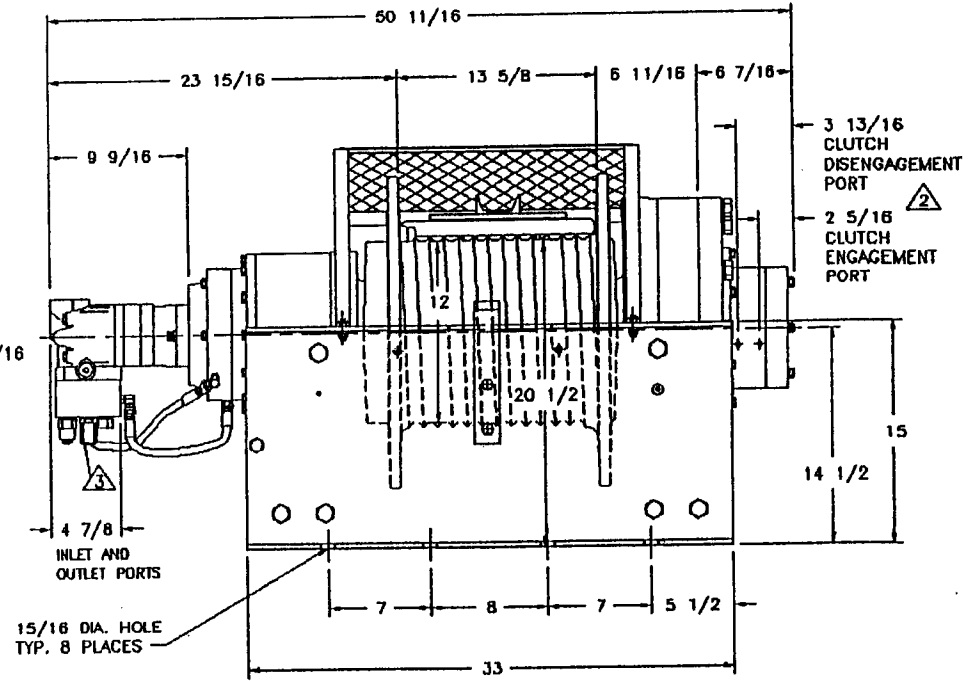
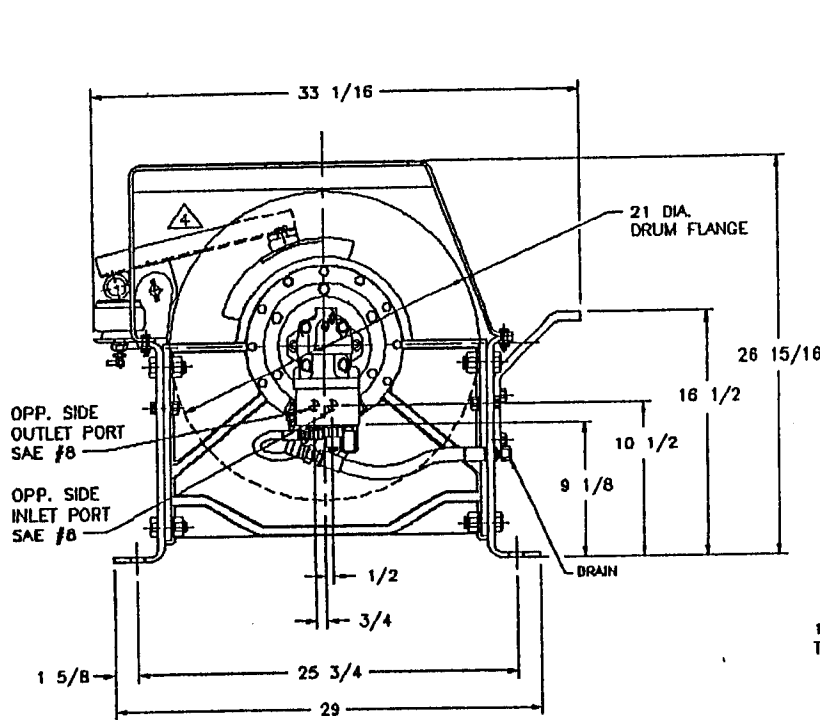
CABLE CAPACITIES ARE IN ACCORDANCE WITH SAE J706 WITH THE EXCEPTION OF THE  
LAST WRAP. ACTUAL CAPACITIES ARE USUALLY UP TO 10% GREATER THAN THOSE SHOWN.

\* LINE PULL AT HIGH LINE SPEED WILL BE APPROXIMATELY HALF OF  
INDICATED TABLE LINE PULL.

**NOTES:**

1. WINCH SHOWN IS DRIVER SIDE WINCH (RIGHT HAND ROTATION)
- 2 SINGLE SPEED AIR/HYDRAULIC KICKOUT, SPRING RETURN - 1/8 NPT PORTS.
- 3 2 SPEED SOLENOID CARTRIDGE: APPLY 24 VOLTS DC FOR HIGH SPEED-LOW TORQUE  
APPLY NO VOLTAGE FOR LOW SPEED-HIGH TORQUE  
**CAUTION: DO NOT SHIFT FROM LOW SPEED TO HIGH SPEED UNDER LOAD.**
- 4 CABLE HOLD DOWN TO BE CONNECTED DIRECTLY TO TRUCK AIR SUPPLY.

55K DRIVER SIDE WINCH  
51883



1" CABLE				
WINCH SPECIFICATIONS				
3,000 PSI @ 24 GPM				
LAYER	LINE PULL* IN LOW (LBS.)	LINE SPEED (FT./MIN.)		CABLE CAPACITY (TOTAL FT.)
		IN LOW	IN HIGH	
1	55,000	13.5	27.0	41
2	47,666	15.5	31.1	90
3	42,058	17.5	35.3	145
4	37,831	19.5	39.4	205

THE RATED LINE PULLS SHOWN ARE FOR THE WINCH ONLY.  
CONSULT THE WIRE ROPE MANUFACTURER FOR WIRE ROPE RATINGS.

CABLE CAPACITIES ARE IN ACCORDANCE WITH SAE J706 WITH THE EXCEPTION OF THE  
LAST WRAP. ACTUAL CAPACITIES ARE USUALLY UP TO 10% GREATER THAN THOSE SHOWN.

\* LINE PULL AT HIGH LINE SPEED WILL BE APPROXIMATELY HALF OF THE  
INDICATED TABLE LINE PULL.

NOTES:

1. WINCH SHOWN IS PASSENGER SIDE WINCH (LEFT HAND ROTATION)

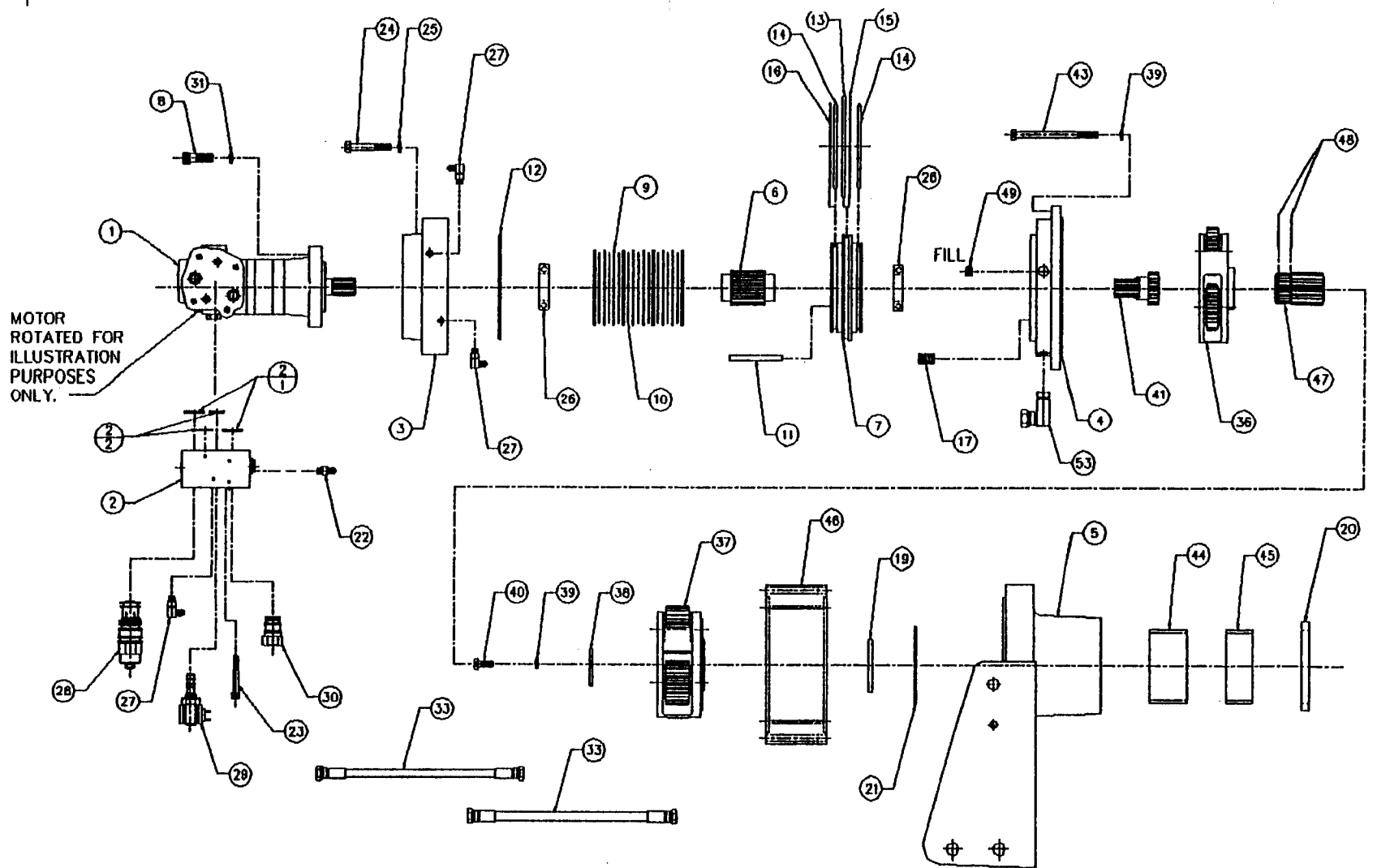
⚠ SINGLE SPEED AIR/HYDRAULIC KICKOUT, SPRING RETURN - 1/8 NPT PORTS.

⚠ 2 SPEED SOLENOID CARTRIDGE: APPLY 24 VOLTS DC FOR HIGH SPEED-LOW TORQUE  
APPLY NO VOLTAGE FOR LOW SPEED-HIGH TORQUE

**CAUTION: DO NOT SHIFT FROM LOW SPEED TO HIGH SPEED UNDER LOAD.**

⚠ CABLE HOLD DOWN TO BE CONNECTED DIRECTLY TO TRUCK AIR SUPPLY.

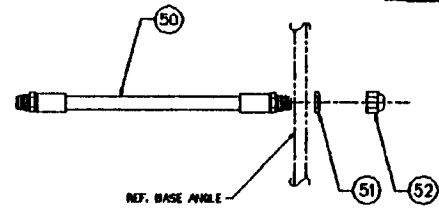
55K PASSENGER SIDE WINCH  
51882



MOTOR END INSTALLATION

- 1.10143\* - 51882 WINCH
- 1.10146\* - 51883 WINCH

\* MOTOR END INSTALLATIONS ARE IDENTICAL EXCEPT FOR CONFIGURATION OF COUNTERBALANCE VALVES.



TORQUE ITEM #52 TO 40 FT-LBS

1.10143 PARTS LIST - 51882 WINCH  
1.10146 PARTS LIST - 51883 WINCH  
MOTOR END INSTALLATION

<u>LOC.</u>	<u>PART NO.</u>	<u>DESCRIPTION</u>	<u>QTY</u>
1.	73108	MOTOR - HYDRAULIC	1
2.	12526	VALVE - COUNTERBALANCE - 2 SPEED - 30 GPM	1
1.	9705	O-RING - 1-3/8 O.D. x 1-1/8 I.D. x 1/8 SECTION	2
2.	9817	O-RING - 13/16 I.D. x 3/32 SECTION	2
3.	11535	HOUSING - BRAKE - OUTER	1
4.	13024	ADAPTER - BRAKE	1
5.	12118	SUPPORT - END - MOTOR	1
6.	11688	SHAFT - BRAKE	1
7.	11443	PISTON - BRAKE	1
8.	1143	CAP SCREW - SOCKET HEAD - 1/2 NC x 1-1/2	2
9.	11603##	PLATE - DISC - FRICTION	10
10.	3159##	PLATE - DRIVE	9
11.	3263	PIN - DOWEL - 5/16 DIA. x 3-1/2 LG.	2
12.	9844<	O-RING - 6-3/4 I.D. x 1/8 SECTION	1
13.	9853<	O-RING - 6-1/2 I.D. x 3/16 SECTION	1
14.	9851<	O-RING - 5-3/8 I.D. x 3/16 SECTION	2
15.	9854<	RING - BACK-UP - 6-1/2 I.D.	1
16.	9852<	RING - BACK-UP - 5-3/8 I.D.	1
17.	2319##	SPRING - COMPRESSION	12
19.	11894	BEARING - THRUST - BRONZE - 2-3/4 I.D.	1
20.	9889	SEAL - 5 I.D. x 6 O.D. x 1/2 W.	1
21.	3328	RING - RETAINING - 5-5/16 O.D.	1
22.	76027	ADAPTER - STR. - #4 O-RING - #4 MJIC	1
23.	4341	CAP SCREW - SOCKET HEAD - 3/8 NF x 2-1/2	4
24.	1373	CAP SCREW - HEX HEAD - 7/16 NC x 2-3/4	6
25.	1388	WASHER - LOCK - 7/16	6
26.	81434	BEARING - BALL - 1-3/4 I.D.	2
27.	76017	ADAPTER - 90° - #4 O-RING - #4 MJIC	3
28.	3177	CARTRIDGE - VALVE	1
29.	70045	VALVE - CARTRIDGE - SOLENOID - 24 VOLT	1
30.	70035	PLUG - VALVE	1
31.	1144	WASHER - LOCK - COLLAR - HI - 1/2	2
33.	75032	HOSE - R1 - #4 x 14" - #4 FJIC	2
36.	12937	ASSEMBLY - CARRIER - PRIMARY	1
37.	12936	ASSEMBLY - CARRIER - SECONDARY	1
38.	12165	PLATE - RETAINER - CARRIER	1
39.	1395	WASHER - LOCK - 3/8	13
40.	1302	CAP SCREW - HEX HEAD - 3/8 NC x 1	1
41.	12166	GEAR - SUN	1
43.	1317	CAP SCREW - HEX HEAD - 3/8 NC x 5-1/2	12
44.	11372	BEARING - BRONZE - 4-1/2 I.D. x 2-1/2 W.	1
45.	11318	BEARING - BRONZE - 4-1/2 I.D. x 1-3/4 W.	1
46.	81120	GEAR - RING	1
47.	10760	GEAR - SUN - SECONDARY	1
48.	3054	RING - RETAINING - 1-7/8 I.D.	2
49.	1987	PLUG - PIPE - 3/8	1

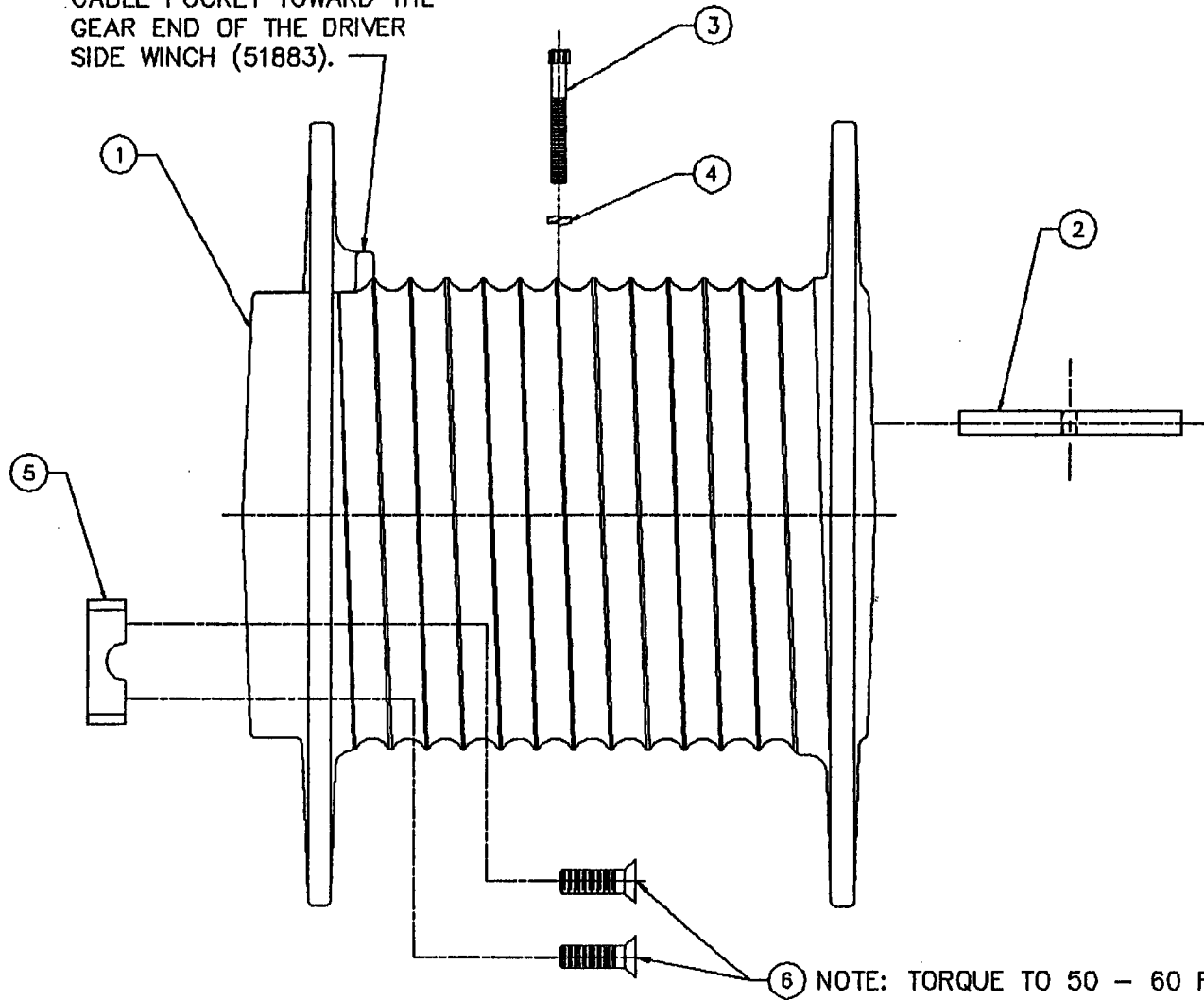
1.10143 PARTS LIST - 51882 WINCH  
1.10146 PARTS LIST - 51883 WINCH  
MOTOR END INSTALLATION (CONT'D)

<u>LOC.</u>	<u>PART</u> <u>NO.</u>	<u>DESCRIPTION</u>	<u>QTY</u>
50.	75227	HOSE - 1/2 R1 x 15"-3/8 M PIPE - #10 MALE JIC	1
51.	1789	NUT - JAM - JIC - #10 - 7/8 - 14	1
52.	79511	CAP - BRASS - #10 - 7/8-14	1
53.	76629	ADAPTER - 90° - SWIVEL - 3/8 MNPT - 3/8 FNPT	1

##ITEM SOLD AS PART OF 9400 KIT ONLY  
< ITEM SOLD AS PART OF 9406 KIT ONLY

CABLE POCKET TOWARD THE MOTOR END OF THE PASSENGER SIDE WINCH (51882).

CABLE POCKET TOWARD THE GEAR END OF THE DRIVER SIDE WINCH (51883).



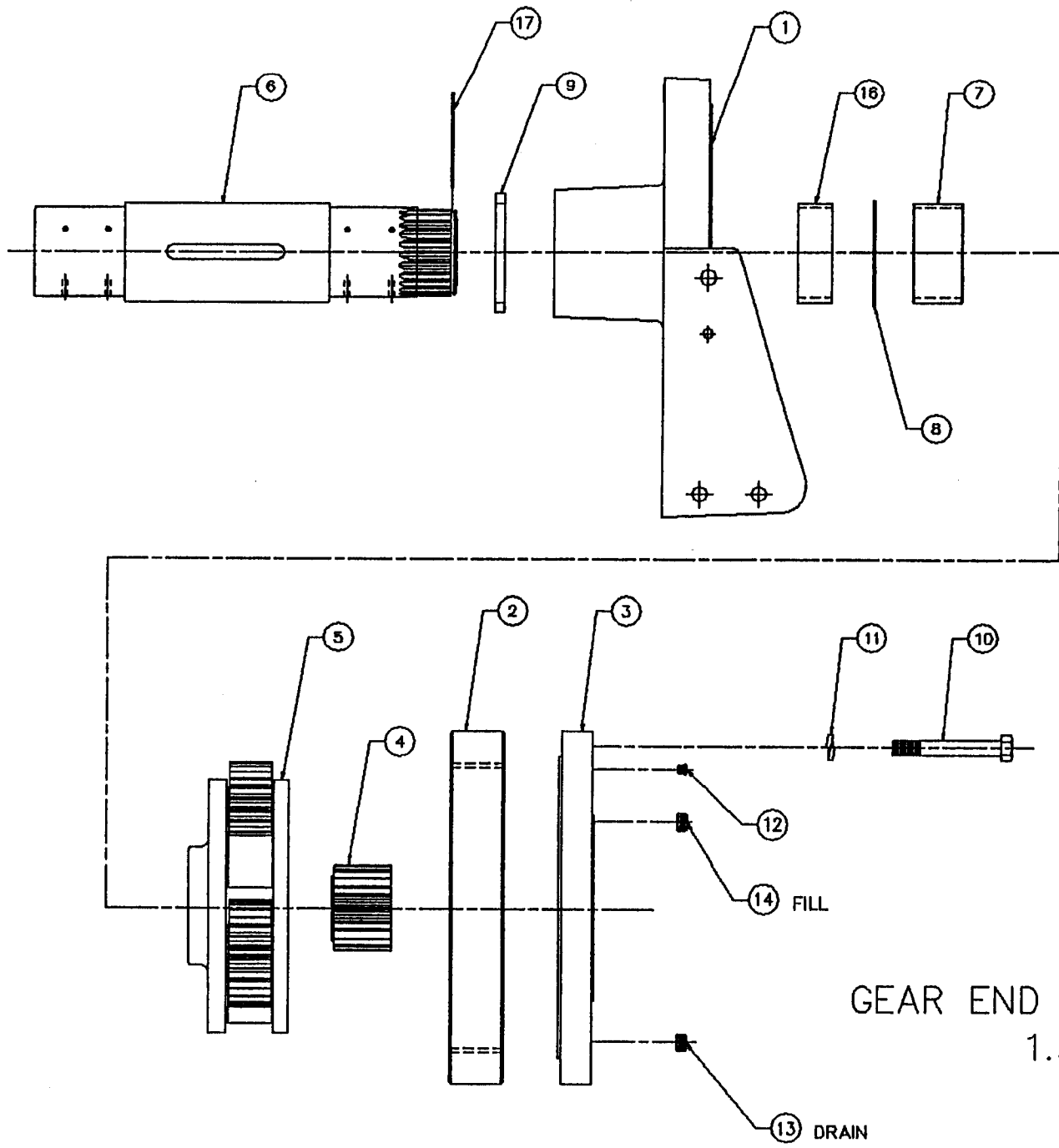
### DRUM INSTALLATION

- 1.20092\* - 51882 WINCH
- 1.20093\* - 51883 WINCH

\* DRUM INSTALLATIONS ARE IDENTICAL EXCEPT FOR POSITIONING ON EACH WINCH.

1.20092 PARTS LIST - 51882 WINCH  
1.20093 PARTS LIST - 51883 WINCH  
CABLE DRUM INSTALLATION

<u>LOC.</u>	<u>PART NO.</u>	<u>DESCRIPTION</u>	<u>QTY</u>
1.	12497	DRUM - GROOVED	1
2.	11788	KEY - DRUM	2
3.	1350	CAP SCREW - SOCKET HEAD - 3/8 NC x 3-1/4	2
4.	1379	WASHER - LOCK - COLLAR - HI - 3/8	2
5.	12488	CLIP - CABLE	1
6.	1586	CAP SCREW - FLAT SOCKET HEAD - 5/8 NC x 2-1/4	2



GEAR END INSTALLATION  
1.30050

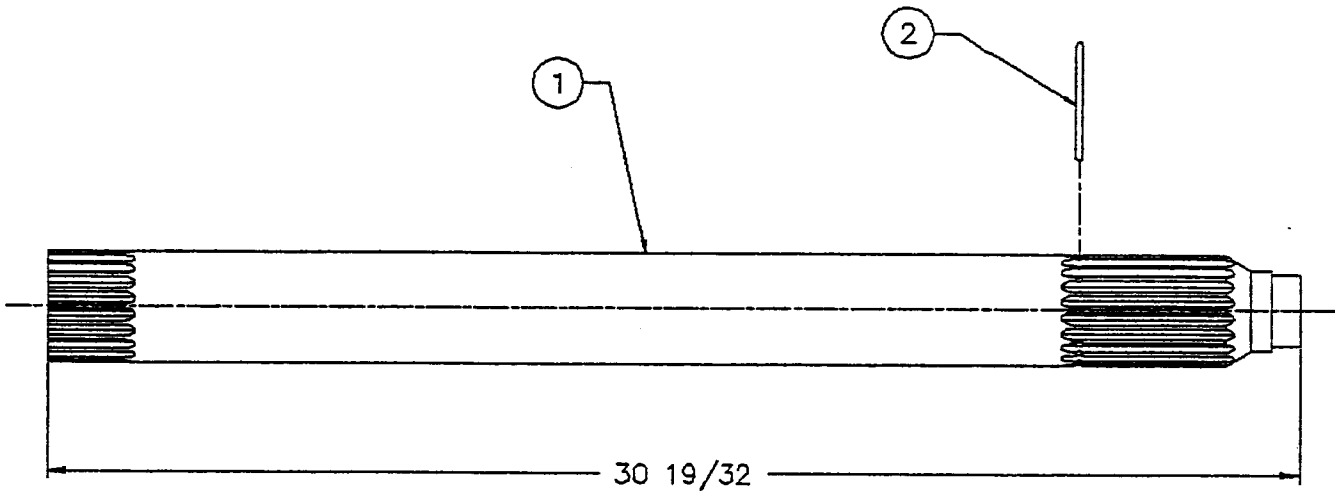
1.30050 PARTS LIST  
GEAR END INSTALLATION  
TYPICAL 51882 & 51883

<u>LOC.</u>	<u>PART NO.</u>	<u>DESCRIPTION</u>	<u>QTY</u>
1.	12149	SUPPORT - END - GEAR	1
2.	12150	GEAR - RING	1
3.	13112	COVER - ADAPTER - PLANETARY	1
4.	12151	GEAR - SUN - CLUTCH	1
5.	12154	ASSEMBLY - CARRIER - PLANETARY	1
6.	12420	SHAFT - OUTPUT	1
7.	11372	BEARING - BRONZE - 4-1/2 I.D. x 2-1/2 W.	1
8.	3328	RING - RETAINING - 5-5/16 O.D.	1
9.	9889	SEAL - 5 I.D. x 6 O.D. x 1/2 W.	1
10.	1615	CAP SCREW - HEX HEAD - 3/4 NC x 5-1/2	12
11.	1695	WASHER - LOCK - 3/4	12
12.	3059	VENT - RELIEF	1
13.	3048	PLUG - MAGNETIC - 1/2 NPT	1
14.	1988	PLUG - PIPE - 1/2	1
15.	10848*	LABEL - WARNING	1
16.	11318	BEARING - BRONZE - 4-1/2 I.D. x 1-3/4 W.	1
17.	3060	RING - RETAINING - 4 I.D.	1

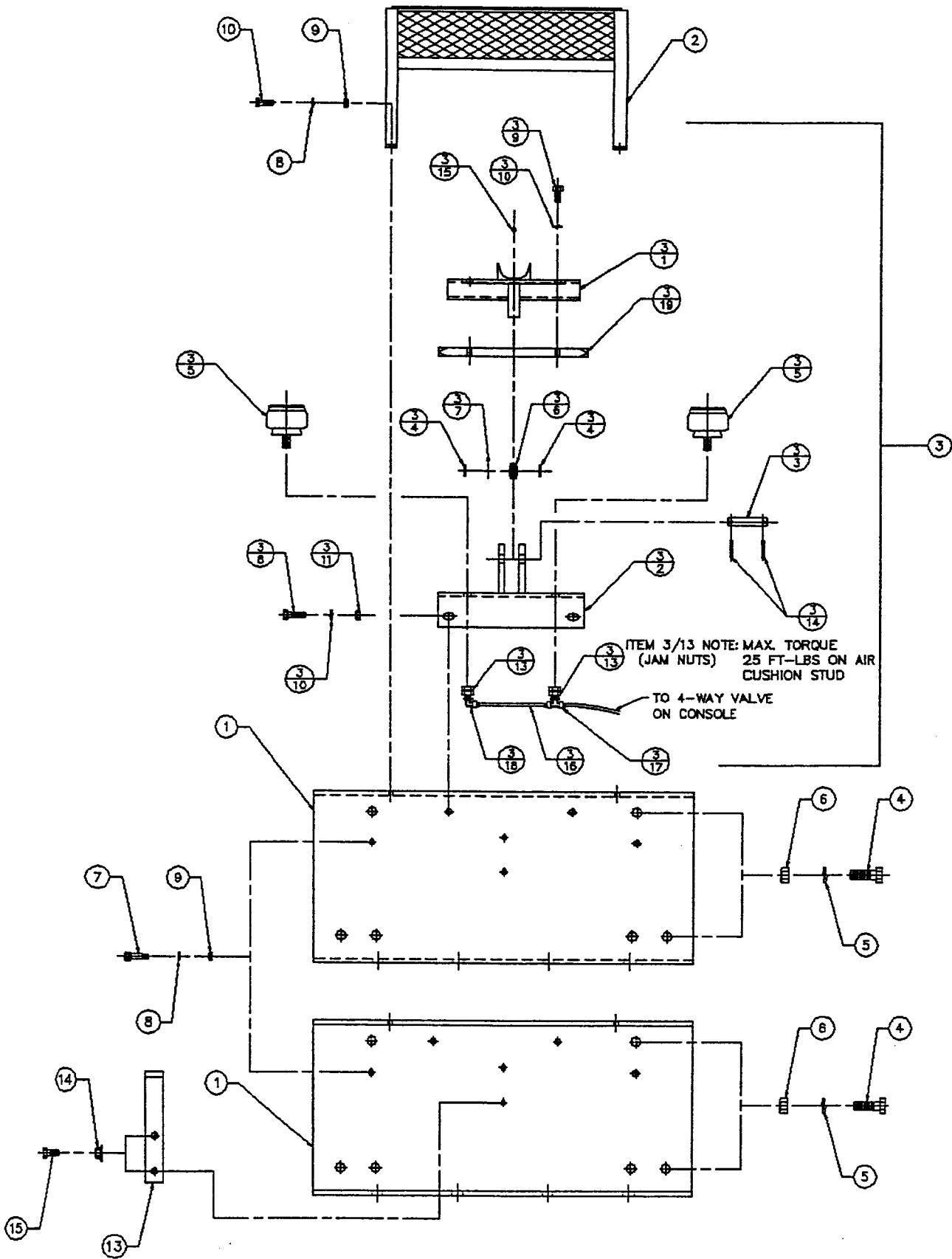
\*NOT SHOWN ON EXPLODED DRAWING

1.40147 PARTS LIST  
INPUT SHAFT INSTALLATION  
TYPICAL 51882 & 51883

<u>LOC.</u>	<u>PART NO.</u>	<u>DESCRIPTION</u>	<u>QTY</u>
1.	12417	SHAFT - INPUT	1
2.	11893	RING - RETAINING - ROUND SECTION 2-3/4	1



INPUT SHAFT INSTALLATION  
1.40147

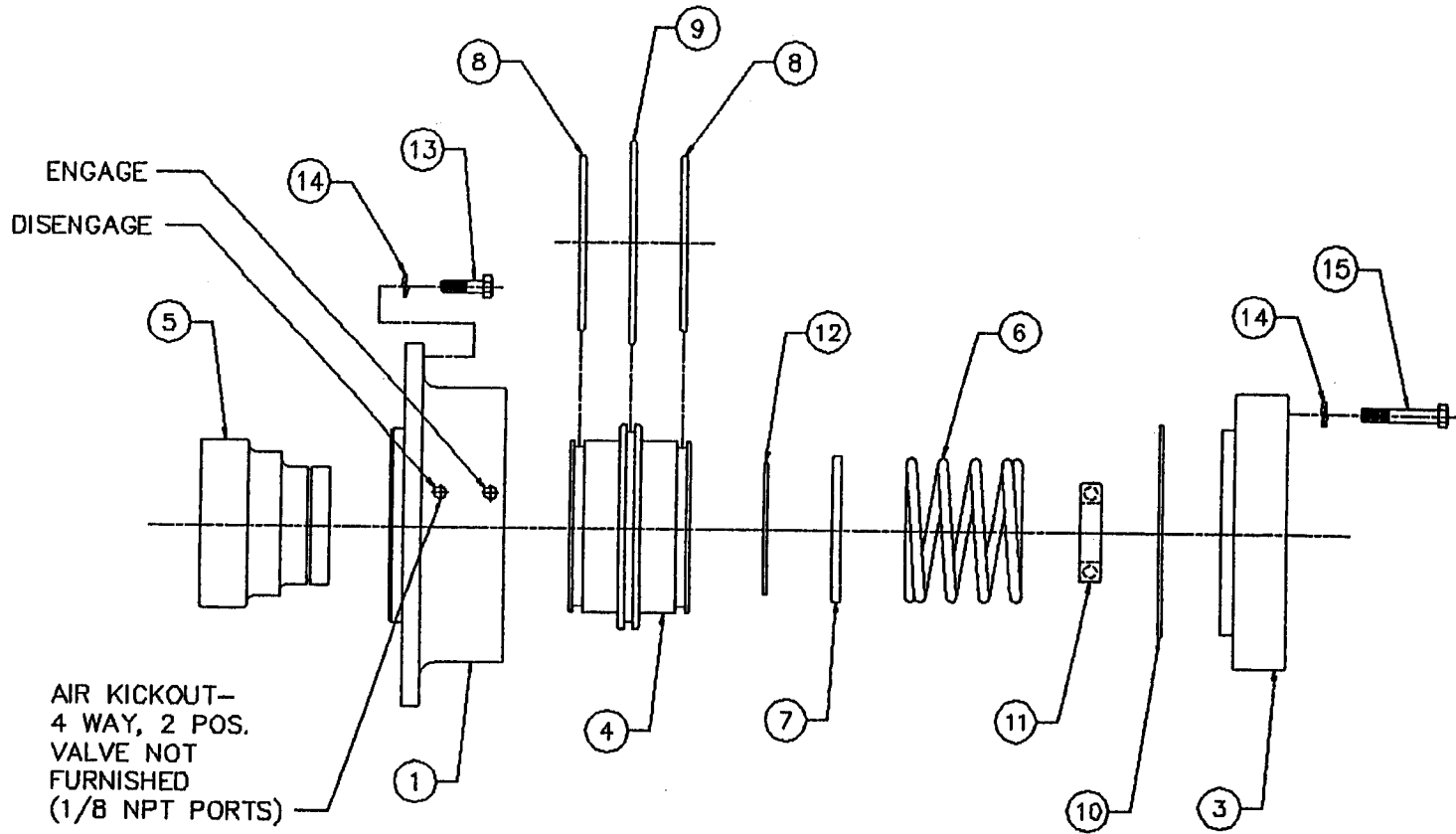


BASE MOUNT INSTALLATION  
1.50146

1.50146 PARTS LIST  
BASE MOUNT INSTALLATION  
TYPICAL 51882 & 51883

<u>LOC.</u>	<u>PART NO.</u>	<u>DESCRIPTION</u>	<u>QTY</u>
1.	12926	MOUNT - BASE	2
2.	12920	GUARD - CABLE	1
3.	12923	ASSEMBLY - DOWN - HOLD - CABLE	1
1.	12403	ARM - ROCKER - DOWN - HOLD - CABLE	1
2.	12976	MOUNT - DOWN - HOLD - CABLE	1
3.	12405	PIN - PIVOT	1
4.	12406	SPACER - PIVOT	2
5.	3445	SPRING - CUSHION - AIR	2
6.	3452	BEARING - RADIAL - PLAIN - SPHERICAL - 3/4 I.D.	1
7.	3453	RING - RETAINING - 1-3/8 O.D.	1
8.	1403	CAP SCREW - HEX HEAD - 1/2 NC x 1-1/2	2
9.	1401	CAP SCREW - HEX HEAD - 1/2 NC x 1	2
10.	1495	WASHER - LOCK - 1/2	4
11.	1490	NUT - HEX - 1/2 NC	2
13.	1589	NUT - JAM - HEX - 5/8 NC	4
14.	3427	PIN - SPRING - 1/4 DIA. x 1-1/2 LG.	2
15.	3289	FITTING - GREASE - 3/16 DRIVE TYP. - STR.	1
16.	69095	TUBING - NYLON - 1/4 O.D. - AIR CT	.83 FT.
17.	78402	TEE - BRANCH - 1/4 TUBE x 1/8 MNPT	1
18.	78403	ADAPTER - 90° - 1/4 TUBE x 1/8 MNPT	1
19.	12615	BAR - RUB - DOWN - HOLD - CABLE	1
4.	1605	CAP SCREW - HEX HEAD - 3/4 NC x 2 1/4	12
5.	1695	WASHER - LOCK - 3/4	12
6.	1690	NUT - HEX - 3/4 NC	12
7.	1475	BOLT - SHOULDER - SOCKET HEAD - 1/2 x 1	4
8.	1395	WASHER - LOCK - 3/8	8
9.	1390	NUT - HEX - 3/8 NC	8
10.	1303	CAP SCREW - HEX HEAD - 3/8 NC x 1-1/4	4
11.	12927*	PLATE - ID - WINCH	1
12.	1165*	RIVET - TYPE - U	4
13.	12970	HOOK - CABLE	1
14.	1488	NUT - FLANGED - HEX - 1/2 NC	2
15.	1403	CAP SCREW - HEX HEAD - 1/2 NC x 1 1/2	2

\* NOT SHOWN ON EXPLODED DRAWING



CLUTCH GEAR END COVER INSTALLATION  
1.60057

1.60057 PARTS LIST  
GEAR END COVER INSTALLATION

<u>LOC.</u>	<u>PART NO.</u>	<u>DESCRIPTION</u>	<u>QTY.</u>
1	12055	ADAPTER - CLUTCH	1
3	12056	COVER - END - CLUTCH	1
4	12054	PISTON - K.O. - CLUTCH	1
5	11879	GEAR - DRIVE - CLUTCH	1
6	11892	SPRING - COMPRESSION	1
7	11951	RING - THRUST	1
8	9600	O-RING - 4-3/4 I.D. x 3/16 SECTION	2
9	9605	O-RING - 5-5/8 I.D. x 3/16 SECTION	1
10	9964	O-RING - 6 I.D. x 1/8 SECTION	1
11	81434	BEARING - BALL - 1-3/4 I.D.	1
12	3359	RING - RETAINING - 3-1/4 I.D.	1
13	1303	CAP SCREW - HEX HEAD - 3/8 NC x 1-1/4	6
14	1395	WASHER - LOCK - 3/8	12
15	1307	CAP SCREW - HEX HEAD - 3/8 NC x 2-1/4 - GRADE 8	6
16	78404*	COUPLING - STR. - 1/4 TUBE x 1/8 MNPT	2

\*NOT SHOWN ON EXPLODED DRAWING - FOR REFERENCE ONLY.

REFER TO 1.00194 PNEUMATIC SYSTEM INSTALLATION DRAWING.