

SEATTLE, WA

SERVING THE U.S. AND CANADA

BELLE CHASSE, LA

206 \* 762 \* 3700

RENTALS \* SALES \* PARTS

504 \* 392 \* 0442



# RASMUSSEN<sup>®</sup>

## EQUIPMENT COMPANY

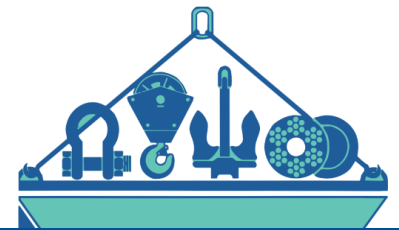
## WIRE ROPE & RIGGING



**THE BEST SOURCE FOR MARINE EQUIPMENT,  
LIFTING & RIGGING SUPPLIES (EST. 1936)**

**WINCHES \* HYDRAULIC POWER UNITS \* SECTIONAL BARGES \* SPUDS &  
SPUDWELLS \* MOORING SYSTEMS**

WWW.RASMUSSENCO.COM \* INFO@RASMUSSENCO.COM \* 1 \* 800 \* 227 \* 7920



## DIESEL MECHANICAL WINCHES



### WINCHES FOR EVERY JOB!

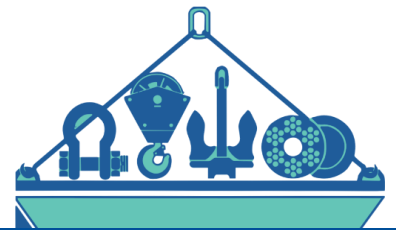
- All mooring applications
- Marine construction
- Erection
- Pipe pulling
- Barge positioning/fleeting
- Spud lifting/operation
- Cable ways and more
- Controlled lowering

### STANDARD EQUIPMENT FEATURES

- Air controlled
- Manual controlled
- Diesel powered
- Torque converters, transmission or transmissions with power-lowering
- Electric start
- Ratchets/Dogs
- Detachable/remote control console

THE BEST SOURCE FOR MARINE EQUIPMENT LIFTING & RIGGING SUPPLIES (EST. 1936)

WWW.RASMUSSENCO.COM \* INFO@RASMUSSENCO.COM \* 1 \* 800 \* 227 \* 7920



SEATTLE, WA

SERVING THE U.S. AND CANADA

BELLE CHASSE, LA

206 \* 762 \* 3700

RENTALS \* SALES \* PARTS

504 \* 392 \* 0442

## Winches 10—25k Pull



### Skagit GU-8

- Double Drum Waterfall Winch
- Manual Controls
- Caterpillar 2.2L Diesel Engine
- Skagit Transmission

Wire Rope Capacity	
Size (in)	Length (ft)
1/2	1230
9/16	970
5/8	790



### Skagit GU-10

- Double Drum Waterfall Winch
- Manual Controls
- Caterpillar 2.2L Diesel Engine
- Skagit Transmission
- 11,463 lbs Bare Drum Pull @ 85 fpm

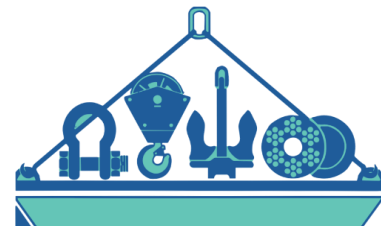
Wire Rope Capacity	
Size (in)	Length (ft)
1/2	2100
5/8	1340
3/4	935



### American AH&D 120-B

- Double Drum Waterfall Winch
- Manual Controls
- Diesel Engine
- Allison Torque Converter

Wire Rope Capacity	
Size (in)	Length (ft)
5/8	2620
3/4	1884



SEATTLE, WA

SERVING THE U.S. AND CANADA

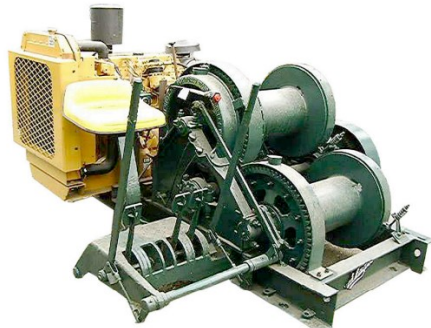
BELLE CHASSE, LA

206 \* 762 \* 3700

RENTALS \* SALES \* PARTS

504 \* 392 \* 0442

## Winches 10—25k Pull



### Skagit BU-15

- Double Drum Waterfall Winch
- Manual Controls
- Detroit Deisel 3-71N65 Engine
- Skagit TRA-50 4-Speed Transmission
- 15,000 lbs Bare Drum Pull @ 50 fpm

Wire Rope Capacity	
Size (in)	Length (ft)
1/2	1340
5/8	850
3/4	590



### Clyde Frame 5

- Double Drum Winch
- Air Controls
- Caterpillar C4.4 Diesel Engine
- Allison Torque Converter
- 20,000 lbs Bare Drum Pull @ 49 fpm

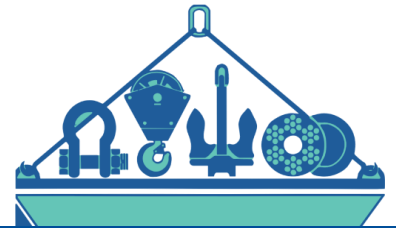
Wire Rope Capacity	
Size (in)	Length (ft)
1/2	3950
5/8	2520
3/4	1750



### Clyde Frame 5

- Triple Drum Winch
- Manual Controls
- Diesel Engine
- Allison Torque Converter
- 20,000 lbs Bare Drum Pull @ 49 fpm

Wire Rope Capacity	
Size (in)	Length (ft)
1/2	3950
5/8	2520
3/4	1750



SEATTLE, WA

SERVING THE U.S. AND CANADA

BELLE CHASSE, LA

206 \* 762 \* 3700

RENTALS \* SALES \* PARTS

504 \* 392 \* 0442

## Winches 26—40k Pull



### Amcon 220

- Double Drum Waterfall Winch
- Air Controls
- Caterpillar 3054 Diesel
- Allison Torque Converter
- 28,000 lbs Bare Drum Pull @ 22 fpm

Wire Rope Capacity	
Size (in)	Length (ft)
3/4	3741
7/8	2576
1	2135
1-1/8	1549



### Skagit BU-18

- Double Drum Waterfall Winch
- Air Controls
- 3-71 Detroit Diesel Engine
- Spicer 4-Speed Transmission
- 33,200 lbs Bare Drum Pull @ 44 fpm

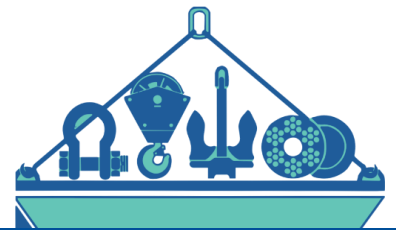
Wire Rope Capacity	
Size (in)	Length (ft)
1/2	5700
3/4	3200
7/8	1875



### Skagit G-45

- Double Drum Waterfall Winch
- Air Controls
- Detroit Diesel 4-71N65 Engine
- Twin Disc Torque Converter
- 35,000 lbs Bare Drum Pull @ 40 fpm

Wire Rope Capacity	
Size (in)	Length (ft)
5/8	3420
3/4	2370
7/8	1340
1	1330



SEATTLE, WA

SERVING THE U.S. AND CANADA

BELLE CHASSE, LA

206 \* 762 \* 3700

RENTALS \* SALES \* PARTS

504 \* 392 \* 0442

## Winches 26—40k Pull



### Skagit G-70

- Double Drum Waterfall Winch
- Manual Controls
- Detroit Deisel 3-71N65 Engine
- Skagit TRA-50 4-Speed Transmission OR Torque Converter
- 35,000 lbs Bare Drum Pull @ 30 fpm

Wire Rope Capacity	
Size (in)	Length (ft)
3/4	3380
7/8	2480
1	590
1-1/4	1500



### G-70

- 4 Drum Back to Back Winch
- Air Controls
- Caterpillar C7 Tier 3 Diesel Engine
- Twin Disc Torque Converter

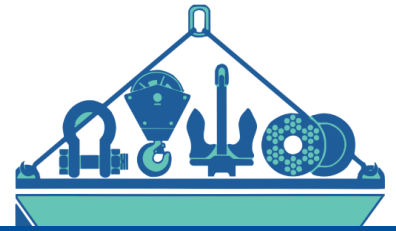
Wire Rope Capacity	
Size (in)	Length (ft)
3/4	3380
7/8	2480
1	1900
1-1/8	1500



### Clyde Frame 6

- Double Drum Winch
- 2 Configurations
- Air Controls, Caterpillar C4.4 Tier 3 Diesel Engine W/Allison Torque Converter OR
- Manual Controls, 4-71 Detroit Diesel Engine W/Torque Converter

Wire Rope Capacity	
Size (in)	Length (ft)
3/4	2920
7/8	2150
1	1600



SEATTLE, WA

SERVING THE U.S. AND CANADA

BELLE CHASSE, LA

206 \* 762 \* 3700

RENTALS \* SALES \* PARTS

504 \* 392 \* 0442

## Winches 26—40k Pull



### Clyde Frame 6

- Triple Drum Winch
- 2 Configurations
- Air Controls, Caterpillar C4.4 Tier 3 Diesel Engine W/Torque Converter OR
- Air Controls, Detroit Diesel Engine W/ Torque Converter
- 35,000 lbs Bare Drum Pull @ 14

Wire Rope Capacity	
Size (in)	Length (ft)
3/4	2920
7/8	2150
1	1600



### Clyde Frame 6

- 4 Drum Back to Back Winch
- Air Controls
- Caterpillar C4.4 Tier 3 Diesel Engine
- Twin Disc Torque Converter

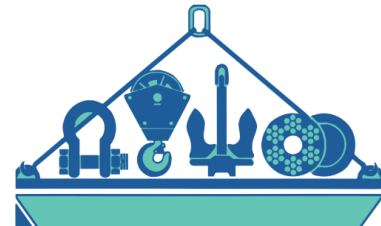
Wire Rope Capacity	
Size (in)	Length (ft)
1/2	5700
3/4	3200
7/8	1875



### Clyde Frame 7

- Double Drum Winch
- 2 Configurations
- Air Controls, Caterpillar C4.4 Power Shift Transmission OR
- Air Controls, 4-71 Detroit Diesel Engine W/Allison Twin Disc Torque Converter
- 40,000 lbs Bare Drum Pull @ 20 fpm

Wire Rope Capacity	
Size (in)	Length (ft)
3/4	4520
7/8	3310
1	2540



SEATTLE, WA

SERVING THE U.S. AND CANADA

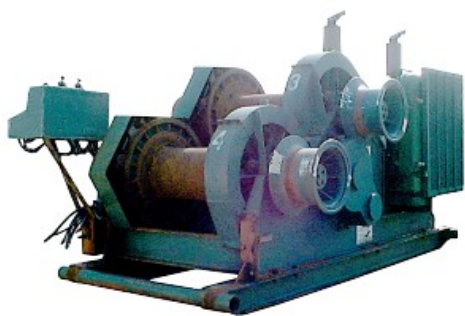
BELLE CHASSE, LA

206 \* 762 \* 3700

RENTALS \* SALES \* PARTS

504 \* 392 \* 0442

## Winches 41—99k Pull



### Skagit G-95

- Double Drum Waterfall Winch
- 2 Configurations
- Air Controls, 6-71 Detroit Diesel, W/ Torque Converter and R&R Box OR
- Manual Controls, 6-71 Detroit Diesel Engine w/ Skagit Transmission
- 50,000 lbs Bare Drum Pull @ 35 fpm

Wire Rope Capacity	
Size (in)	Length (ft)
3/4	4900
7/8	3600
1	2800
1-1/8	2200



### Clyde Frame 8

- Double Drum Waterfall Winch
- 3 Configurations
- Air Controls, 6-71 Detroit Diesel, W/ Torque Converter OR
- Air Controls, VM 100HP Diesel Hydraulic Power Unit W/Hagglund Hydraulic Motor OR
- Air Control Engine, Hydraulic Motor

Wire Rope Capacity	
Size (in)	Length (ft)
1	3400
1-1/8	2690
1-1/4	2180

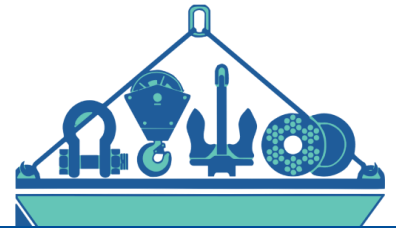


### Clyde Frame 8

- Triple Drum Winch
- Air Controls, 6-71 Detroit Diesel Engine, w/ Torque Converter
- 50,000 lbs Bare Drum Pull

Wire Rope Capacity	
Size (in)	Length (ft)
1	3400
1-1/8	2690
1-1/4	2180





SEATTLE, WA

SERVING THE U.S. AND CANADA

BELLE CHASSE, LA

206 \* 762 \* 3700

RENTALS \* SALES \* PARTS

504 \* 392 \* 0442

## Winches 41—99k Pull



### Clyde Frame 10

- Double Drum Winch
- Air Controls
- 6-71 Detroit Diesel Engine
- Torque Converter and R&R Box
- 50,000 lbs Bare Drum Pull

Wire Rope Capacity	
Size (in)	Length (ft)
1-1/4	4000
1-1/2	2930



### Rasmussen R4565

- Triple Drum Waterfall Winch
- Detroit Diesel 3-71 Engine
- Air Controls
- Allison Transmission
- 55,000 lbs Bare Drum Pull @ 50 fpm

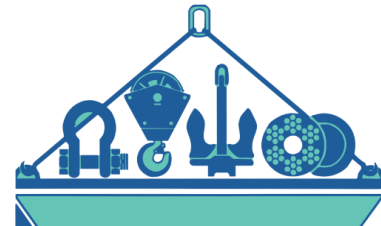
Wire Rope Capacity	
Size (in)	Length (ft)
1/2	5750
5/8	3670
3/4	2550
7/8	1879
1	1450



### G-120

- Double Drum Waterfall Winch
- Detroit Diesel 4-71 Engine
- 2 Configurations
- Air Controls, W/Twin Disc Torque Converter and R&R Box OR
- Manual Controls, Skagit 4-Speed Transmission
- 55,000 lbs Bare Drum Pull @ 50 fpm

Wire Rope Capacity	
Size (in)	Length (ft)
5/8	3420
3/4	2370
7/8	1340
1	1330



SEATTLE, WA

SERVING THE U.S. AND CANADA

BELLE CHASSE, LA

206 \* 762 \* 3700

RENTALS \* SALES \* PARTS

504 \* 392 \* 0442

## Winches 41—99k Pull



### G-120

- Triple Drum Waterfall Winch
- Manual Controls
- Detroit Diesel 4-71 Engine
- 5631 Allison Transmission
- 55,000 lbs Bare Drum Pull @ 50 fpm

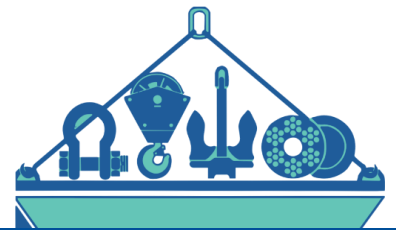
Wire Rope Capacity	
Size (in)	Length (ft)
1-1/8	4900
1-1/4	3600
1-3/8	2800



### Skagit RB-80

- Double Drum Waterfall Winch
- Air Controls
- 4-71 Detroit Diesel
- Twin Disk Torque Converter
- 96,000 lbs Bare Drum Pull @ 12 fpm

Wire Rope Capacity	
Size (in)	Length (ft)
1-1/8	3000
1-1/4	2440
1-3/8	2000



SEATTLE, WA

SERVING THE U.S. AND CANADA

BELLE CHASSE, LA

206 \* 762 \* 3700

RENTALS \* SALES \* PARTS

504 \* 392 \* 0442

## Winches 100—199k Pull

### Clyde Frame 12



- Double Drum Winch
- Air Controls
- 8-71 Detroit Diesel Engine
- Twin Disk Torque Converter
- 100,000 lbs Bare Drum Pull

Wire Rope Capacity	
Size (in)	Length (ft)
1-1/4	7500
1-1/2	5300

### Skagit BU-140



- Double Drum Waterfall Winch
- 2 Configurations
- Manual Controls, 6-71 Detroit Diesel Engine W/Torque Converter OR
- Air Controls, 6-71 Detroit Diesel Engine, W/Torque Converter and R&R Box
- 120,000 lbs Bare Drum Pull @ 14 fpm

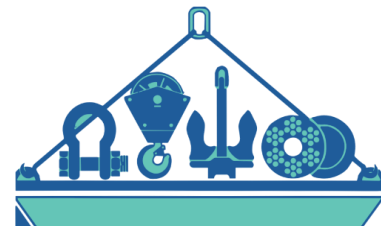
Wire Rope Capacity	
Size (in)	Length (ft)
1-1/8	2300
1-1/4	1850
1-3/8	1530

### Skagit RB-90



- Single Drum Winch
- Air Controls
- 8V Detroit Diesel
- 2800 Series Transmission (1:1 forward/reverse)
- 140,000 lbs Bare Drum Pull @ 20 fpm

Wire Rope Capacity	
Size (in)	Length (ft)
1-1/8	4650
1-1/4	3750
1-3/8	3100
1-1/2	2600



SEATTLE, WA

SERVING THE U.S. AND CANADA

BELLE CHASSE, LA

206 \* 762 \* 3700

RENTALS \* SALES \* PARTS

504 \* 392 \* 0442

## Winches 100—199k Pull



### Skagit RB-90

- Double Drum Waterfall Winch
- ALL Air Controlled, W/6V Detroit Diesel Engine
- 3 Power Transmission Configurations
- Twin Disk Torque Converter W/R&R Box, OR Only Twin Disk Torque Converter OR 33-1310 Power Lowering Transmission

Wire Rope Capacity	
Size (in)	Length (ft)
1-1/8	4650
1-1/4	3750
1-3/8	3100
1-1/2	2600



### Skagit RB-90

- Triple Drum Waterfall Winch
- Air Controls
- 3126B Caterpillar Diesel Engine
- Torque Converter
- 130,000 lbs Bare Drum Pull @ 20 fpm

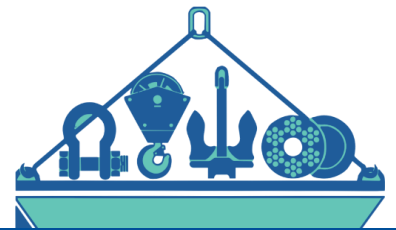
Wire Rope Capacity	
Size (in)	Length (ft)
1-1/8	4650
1-1/4	3750
1-3/8	3100
1-1/2	2600



### Amcon 625

- Double Drum Waterfall Winch
- Air Controls
- 6-71 Detroit Diesel Engine
- 33-1314 Transmission
- 180,000 lbs Bare Drum Pull @ 13 fpm

Wire Rope Capacity	
Size (in)	Length (ft)
1-3/8	6578
1-1/2	5752
1-3/4	4189
2	3129



SEATTLE, WA

SERVING THE U.S. AND CANADA

BELLE CHASSE, LA

206 \* 762 \* 3700

RENTALS \* SALES \* PARTS

504 \* 392 \* 0442

## Winches 200—300k Pull



### Amcon 750

- Double Drum Waterfall Winch
- Air Controls
- 8-71 Detroit Diesel Engine
- 33-1314 Transmission
- 200,000 lbs Bare Drum Pull @ 25 fpm

#### Wire Rope Capacity

Size (in)	Length (ft)
1-1/2	7000
1-3/4	4900
2	4000



### Skagit RB-90SS

- Double Drum Waterfall Winch
- Air Controls
- 200HP John Deere Tier 3
- Allison Power Shift Transmission 3F/3R
- Jaw Clutch on Drum Pinion
- 200,000 lbs Stall First Layer @ 26 fpm

#### Wire Rope Capacity

Size (in)	Length (ft)
1-1/4	6100
1-1/2	4200

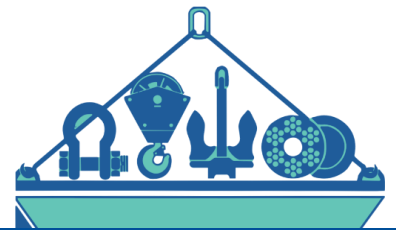


### Skagit RB-97

- Double Drum Waterfall Winch
- Air Controls
- 2 Configurations
- Caterpillar C7 OR 6V Detroit Diesel Engine, Power Lowering Transmission OR
- 6V Detroit Diesel Engine, 5633 Transmission W/3F/3R Gears
- 200,000 lbs Bare Drum Pull @ 20 fpm

#### Wire Rope Capacity

Size (in)	Length (ft)
1-1/8	8000
1-1/4	5630
1-1/2	4500
1-5/8	3850
1-3/4	3250



SEATTLE, WA

SERVING THE U.S. AND CANADA

BELLE CHASSE, LA

206 \* 762 \* 3700

RENTALS \* SALES \* PARTS

504 \* 392 \* 0442

## Winches 200—300k Pull



### Skagit MD-97

- Single Drum Winch
- Air Controls
- 12V Detroit Diesel Engine
- Vicon 1100 Series Torque Converter
- 220,000 lbs Bare Drum Pull @ 10 fpm

Wire Rope Capacity	
Size (in)	Length (ft)
1-1/8	8750
1-1/2	4900
1-3/4	3600
1-7/8	3150
2	2750



### Skagit MD-97

- Double Drum Waterfall Winch
- Air Controls
- 8V Detroit Diesel Engine
- Torque Converter
- 220,000 lbs Bare Drum Pull @ 10 fpm

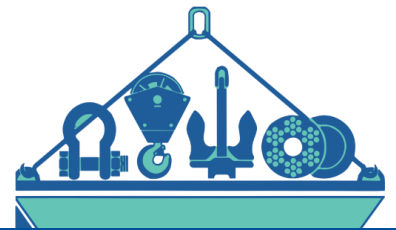
Wire Rope Capacity	
Size (in)	Length (ft)
1-1/8	8750
1-1/2	4900
1-3/4	3600
1-7/8	3150
2	2750



### Skagit DTW-100

- Double Drum Waterfall Winch
- Air Controls
- 6V Detroit Diesel Engine
- Allison 550 Torque Converter
- 190,000 lbs Bare Drum Pull @ 8 fpm

Wire Rope Capacity	
Size (in)	Length (ft)
1-3/4	4400
2	3400



SEATTLE, WA

SERVING THE U.S. AND CANADA

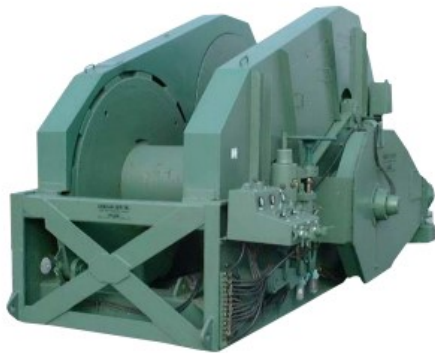
BELLE CHASSE, LA

206 \* 762 \* 3700

RENTALS \* SALES \* PARTS

504 \* 392 \* 0442

## Winches 200—300k Pull



### Skagit DTW-150

- Double Drum Waterfall Winch
- Air Controls
- 2 Configurations
- 8V-71 Detroit Diesel W/CRT-5633 Torque Converter OR
- 8V-71 Detroit Diesel W/5633 Transmission
- 260,000 lbs Bare Drum Pull @ 8 fpm

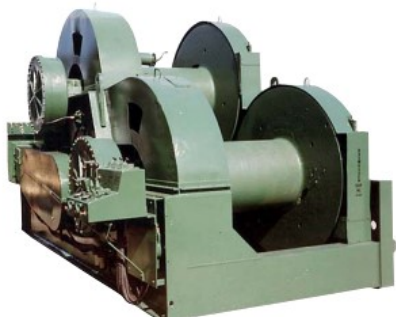
Wire Rope Capacity	
Size (in)	Length (ft)
2	3900
2-1/4	3100



### Skagit RB-100

- Double Drum Waterfall Winch
- Air Controls
- 12V Detroit Diesel Engine
- Torque Converter
- 300,000 lbs Bare Drum Pull @ 5 fpm

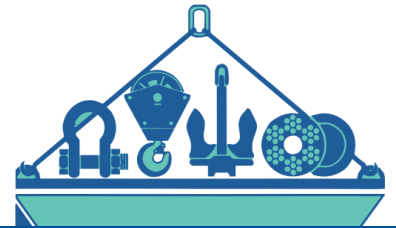
Wire Rope Capacity	
Size (in)	Length (ft)
1-1/2	6000
1-5/8	5300
1-3/4	4600
1-7/8	4000
2	3500



### Skagit RB-150

- Double Drum Waterfall Winch
- Air Controls
- Detroit Series 60 OR Caterpillar C13 Diesel Engine
- 1601 Transmission
- 300,000 lbs Bare Drum Pull @ 5 fpm

Wire Rope Capacity	
Size (in)	Length (ft)
1-1/2	8440
1-5/8	7100
1-3/4	6200
1-7/8	5400
2	4750



SEATTLE, WA

SERVING THE U.S. AND CANADA

BELLE CHASSE, LA

206 \* 762 \* 3700

RENTALS \* SALES \* PARTS

504 \* 392 \* 0442

## Info needed to size winch

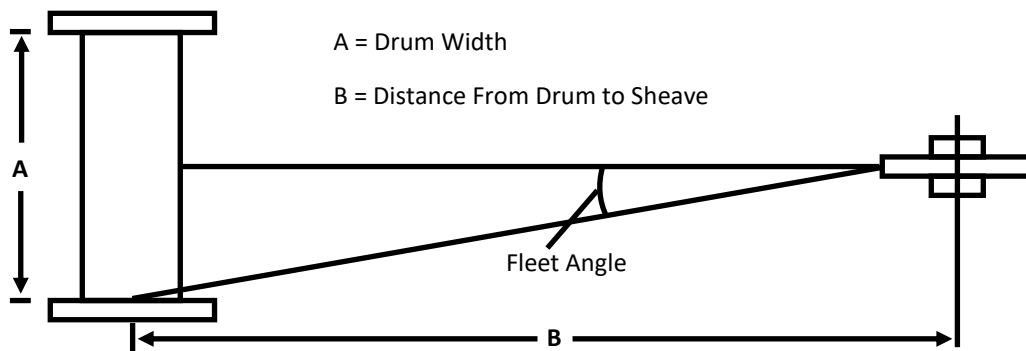
- Diameter of wire rope
- Length of wire rope per drum
- Amount of line pull required including at what position on the drum
- Type of control desired, air/manual
- Application or use

## Fleeting distance guidelines

To find the minimum distance required to the first sheave (sheave centered on drum),

**Drum length (in) ÷ 0.6288 = 1-1/2° Fleeting Distance (ft)**

As an approximate guide, for every inch from guide sheave centerline to drum flange, 3.2ft of fleeting distance is required (can be used for non-centered sheave)



## Proper Fleet Angle Guidelines

When setting up your winch, ensure a proper fleeting angle so the wire rope is spooled back onto the winch uniformly. The fleet angle is important to ensure the lifespan of the wire rope and the safety of the operator. To achieve this, a sheave must be placed far enough away from the drum for the angle between the centerline of the drum and the flange, with respect to the sheave, to be <math><1.5^\circ</math>.

### IMPORTANT

Before Installation see maintenance and operations manual for additional warnings and precautions. This equipment is not to be used for lifting, supporting, or transporting people or lifting or supporting loads over people. Line speed and pull performance on our rental fleet is estimated on manufacturer specifications. Consult manufacturer for exact line speeds and pull. All quotes are subject to products availability, prior sale or other disposition. All details are believed correct, but without guarantee.