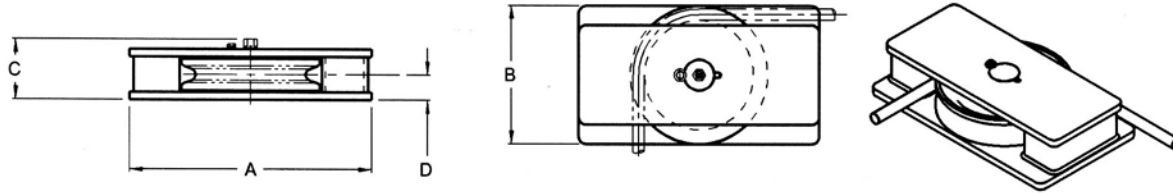




Horizontal Guide Sheaves



Model Number	Units of Measure	Maximum Wire Size	Wire Breaking Strength	Sheave Tread Diameter	A	B	C	D	Weight
MD-1210	Inches	3/4	58,800 lbs	8- 1/2	17	11	5- 1/2	2- 3/16	85 lbs
	MM	19	262 kN	216	432	279	140	56	39 Kg
MC-1212	Inches	1	89,800 lbs	10	19	12	6- 1/2	2- 3/4	150 lbs
	MM	25	399 kN	254	483	305	165	70	68 Kg
MD-1214	Inches	1- 1/4	159,800 lbs.	11- 7/16	21	14	7	2- 3/4	200 lbs
	MM	32	711 kN	291	533	356	178	70	91 Kg
MD-1218	Inches	1- 1/2	228,000 lbs.	14- 1/4	31- 1/2	18	8	3- 5/16	450 lbs
	MM	38	1014 kN	362	800	457	203	84	204 Kg
MC-1222	Inches	1- 3/4	266,000 lbs.	18- 1/2	41	22	8- 1/2	3- 1/2	880 lbs
	MM	44	1183kN	470	1041	559	216	89	399 Kg

Standard Features

- Designed for breaking strength of wire with 90° wrap on sheave
- Grease lubricated bronze bearings
- Hardened rope grooves for longer life
- Weld down base
- Smith Berger Quality

Optional Features

- Multiple Sheaves
- Bolt down base
- Load monitoring system
- Special sheaves for high performance ropes
- Paint to your specification
- Timken bearings
- Third party certification

We will custom engineer any of our products to suit YOUR requirements!